

HPLC Analysis of Six Active Components of Caulis Lonicerae Using a Phenyl-1 Column

Xu Qun,¹ Huang Xiongfeng,¹ and Jeffrey Rohrer²

¹Thermo Fisher Scientific, Shanghai, People's Republic of China

²Thermo Fisher Scientific, Sunnyvale, CA, USA

Key Words

Pharmacopoeia of the People's Republic of China (PPRC), Traditional Chinese Medicine, Natural Iridoid Glycosides, Natural Organic Acids, Flavonoids

Introduction

Caulis Lonicerae (Figure 1), the dried rattan of *Lonicera japonica* (Caprifoliaceae or honeysuckle family), is an important traditional Chinese medicine used for the treatment of such ailments as acute fever, headache, respiratory infection, and epidermic diseases. The major active components in Caulis Lonicerae are loganin, sweroside, chlorogenic acid, caffeic acid, rutin, and galuteolin.¹ Their structures are shown in Figure 2. The Pharmacopoeia of the People's Republic of China (PPRC) 2010 regulates Caulis Lonicerae with different high-performance liquid chromatography (HPLC) methods for the determination of loganin (using a phenyl stationary phase) and chlorogenic acid (using a C18 phase), respectively.² Therefore, the PPRC quality control (QC) protocols for Caulis Lonicerae are inconvenient (requiring two methods) and inadequate (determining only two target components). Although there are other methods to determine sweroside, caffeic acid, rutin, galuteolin, and up to three other minor active components of Caulis Lonicerae on a C18 stationary phase using HPLC,³⁻⁵ these methods require long separation times (≥ 25 min) and have insufficient peak resolution between loganin and sweroside.

Goal

To develop an efficient and comprehensive HPLC QC method for the analysis of Caulis Lonicerae. This method must separate the six main active components (loganin, sweroside, chlorogenic acid, caffeic acid, rutin, and galuteolin).



Figure 1. *Caulis Lonicerae*: A) *Lonicera japonica*, and B) dried rattan.

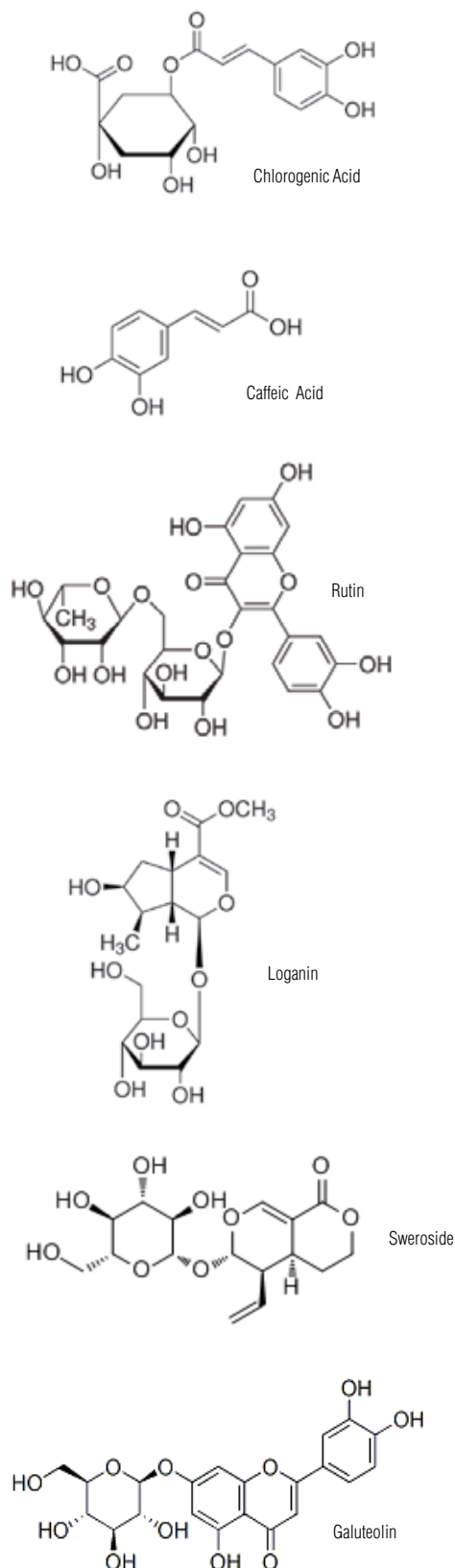


Figure 2. Structures of the six major active components of *Caulis Lonicerae*.

Experimental

A Thermo Scientific Acclaim Phenyl-1 4.6 × 150 mm, 3 μm column (P/N 071969) was chosen for this separation because its phenyl groups are structurally similar to the phenyl groups and aromatic structures contained in the compounds of interest. The separation of a *Caulis Lonicerae* sample can be completed within 10 min, and the resolution between loganin and sweroside in 5.5 min using a 0.4% formic acid/acetonitrile mobile phase.

Equipment

- Thermo Scientific Dionex UltiMate 3000 HPLC system including:
 - DGP-3600 Dual Ternary Rapid Separation (RS) Pump System
 - SRD-3600 Integrated Solvent and Degasser Rack
 - WPS-3000TRS Well Plate Sampler, Thermostatted
 - TCC-3000RS Thermostatted Column Compartment
 - DAD-3000RS Diode Array Detector (with a 5 μL semianalytical flow cell)
- Thermo Scientific Dionex Chromeleon 6.80 SR9 Chromatography Data System (CDS) software or higher
- Kudos SK3200LH Ultrasonic Generator, Kudos Ultrasonic Instrumental Co., Shanghai, China

Reagents and Standards

Deionized (DI) water, 18.2 MΩ–cm resistivity
 Acetonitrile (CH₃CN), HPLC grade, (Cat.#AC610010040), Fisher Chemical
 Methanol (CH₃OH), HPLC grade, Cat.# AC610090040), Fisher Chemical
 Formic acid (FA), analytical grade, SCRC, China
 Loganin, sweroside, chlorogenic acid, caffeic acid, rutin, and galuteolin, purity ≥ 98%, Research Center of Standardization of CTM, Shanghai, China

Sample Preparation

The *Caulis Lonicerae* sample was purchased from the Research Center of Standardization of CTM, Shanghai, China.

Accurately weigh 0.2 g of sample powder and place in a 10 mL volumetric flask. Add 10 mL methanol/water (1:1, v/v). After 45 min in an ultrasonic bath, cool to room temperature. Filter it through a 0.22 μm membrane (Millex-LH®) prior to injection.

Calibration linearity for the six compounds was investigated by making five consecutive injections of a mixed standard prepared at seven different concentrations, 1.0, 2.0, 5.0, 10, 20, 50, and 100 mg/L. The external standard method was used to establish the calibration curve and to quantify the amounts of the six active components in samples. Table 3 reports the data from the calibration as calculated by the Chromeleon™ CDS software.

MDLs were calculated using the single-sided Student's test method (at the 99% confidence limit). Using seven consecutive injections of a *Caulis Lonicerae* sample mixed with loganin, sweroside, chlorogenic acid, caffeic acid, rutin, and galuteolin standards, the testing determined the standard deviation values for calculating MDLs, also reported in Table 3.

Table 3. Method linearity data and MDLs.

| Analyte | Regression Equation | r | Range (mg/L) | MDL (mg/L) |
|------------------|-------------------------|--------|--------------|------------|
| Loganin | $Y = 0.1309 X - 0.1541$ | 0.9996 | 1.0–100.0 | 0.37 |
| Sweroside | $Y = 0.0950 X - 0.1179$ | 0.9996 | | 0.39 |
| Chlorogenic Acid | $Y = 0.1499 X - 0.2366$ | 0.9992 | | 0.81 |
| Caffeic Acid | $Y = 0.3463 X - 0.4300$ | 0.9996 | | 0.30 |
| Rutin | $Y = 0.0800 X - 0.1156$ | 0.9993 | | 0.35 |
| Galuteolin | $Y = 0.0887 X - 0.1525$ | 0.9984 | | 0.64 |

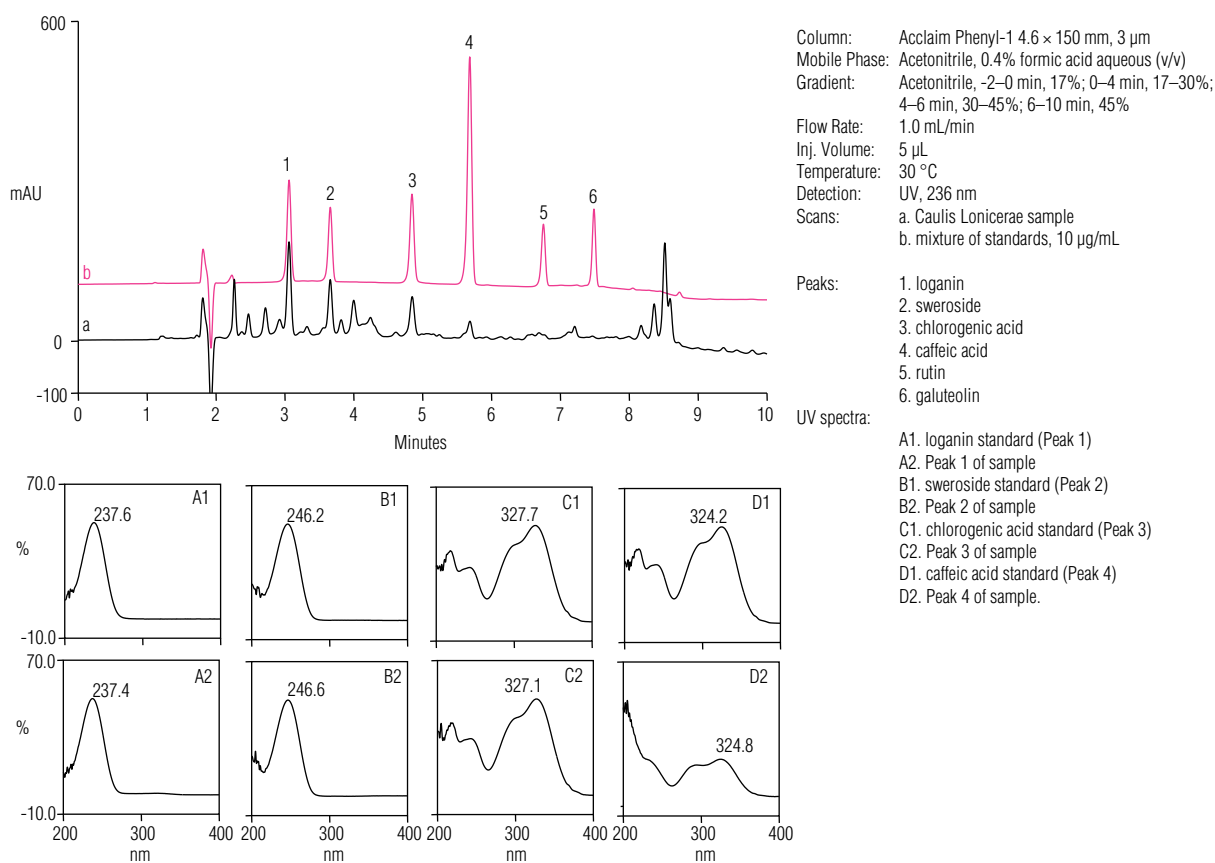


Figure 4. Chromatograms and UV spectra of a) a *Caulis Lonicerae* sample, and b) a mixture of standards (10 μg/mL each).

Sample Analysis

Chromatograms of a Caulis Lonicerae sample as well as the mixture of loganin, sweroside, chlorogenic acid, caffeic acid, rutin, and galuteolin standards are shown in Figure 4. Comparison of UV spectra and retention times allows the identification of loganin, sweroside, chlorogenic acid and caffeic acid in the Caulis Lonicerae sample. Recoveries for each standard in spiked Caulis Lonicerae sample ranged from 85–99%, suggesting that the analysis method is accurate. The results are shown in Table 4.

Conclusion

This work describes an HPLC method that baseline resolves six active components in Caulis Lonicerae using an Acclaim Phenyl-1, 4.6 × 150 mm, 3 µm column and a 0.4% formic acid/acetonitrile mobile phase. This method can be used for the quality control of Caulis Lonicerae, a common medicinal plant in China. It is superior to the PPRC method that measures only two of the purported active components of Caulis Lonicerae with two separate methods that require long separation times and have insufficient peak resolution between loganin and sweroside.

Table 4. Analysis results of the active components of Caulis Lonicerae

| Analyte | Detected (mg/g) | Added (mg/g) | Found (mg/g) | Recovery (%) |
|------------------|-----------------|--------------|--------------|--------------|
| Loganin | 2.73 | 2.50 | 2.18 | 87 |
| Sweroside | 2.79 | 2.50 | 2.23 | 89 |
| Chlorogenic acid | 2.77 | 2.50 | 2.33 | 93 |
| Caffeic acid | 0.40 | 0.50 | 0.45 | 90 |
| Rutin | Not Found | 0.50 | 0.425 | 85 |
| Galuteolin | Not Found | 0.50 | 0.495 | 99 |

References

- Gou, Z.P.; Wan, D.G. Determination of Chlorogenic Acid in Caulis Lonicerae by HPLC, *Chin. Traditional Patent Med.* **2006**, *28*, 408.
- Pharmacopoeia Commission of the Ministry of Health of the People's Republic of China. *Pharmacopoeia of the People's Republic of China*, 9th ed.; China Medical Science and Technology Press, **2010**; Vol. 1, 179.
- Qian, Z.M.; Li, H.J.; Li, P.; Tang D.; Qin, S.J. Determination of Eight Bioactive Compounds in Caulis Lonicerae Japonicae and Folium Lonicerae Japonicae by High Performance Liquid Chromatography, *Chin. J. Anal. Chem.* **2007**, *8*, 1159–1163.
- Qian, Z.M.; Li, H.J.; Li, P.; Chen, J.; Tang D. Simultaneous Quantification of Seven Bioactive Components in Caulis Lonicerae Japonicae by High Performance Liquid Chromatography, *Biomed. Chromatogr.* **2007**, *21*, 649–654.
- Li, H.J.; Qian, Z.M.; Li, P.; Ren, M.T.; Chen, J.; Xin, G.Z. Simultaneous Determination of Nine Bioactive Constituents of Caulis Lonicerae Japonicae by High Performance Liquid Chromatography Coupled with Mass Spectrometry, *Natural Product Communications* **2008**, *3* (5), 655–659.

www.thermofisher.com

©2016 Thermo Fisher Scientific Inc. All rights reserved. All trademarks are the property of Thermo Fisher Scientific Inc. and its subsidiaries. Specifications, terms and pricing are subject to change. Not all products are available in all countries. Please consult your local sales representative for details.

| | | | |
|-----------------------------------|----------------------------------|--|---------------------------------|
| U.S./Canada (847) 295 7500 | Denmark (45) 36 36 90 90 | Sweden (46) 8 473 3380 | India (91) 22 2764 2735 |
| Brazil (55) 11 3731 5140 | France (33) 1 39 30 01 10 | Switzerland (41) 62 205 9966 | Japan (81) 6 6885 1213 |
| Austria (43) 1 616 51 25 | Germany (49) 6126 991 0 | United Kingdom (44) 1276 691722 | Korea (82) 2 3420 8600 |
| Benelux (31) 20 683 9768 | Ireland (353) 1 644 0064 | Australia (61) 3 9757 4486 | Singapore (65) 6289 1190 |
| (32) 3 353 42 94 | Italy (39) 02 51 62 1267 | China (852) 2428 3282 | Taiwan (886) 2 8751 6655 |